



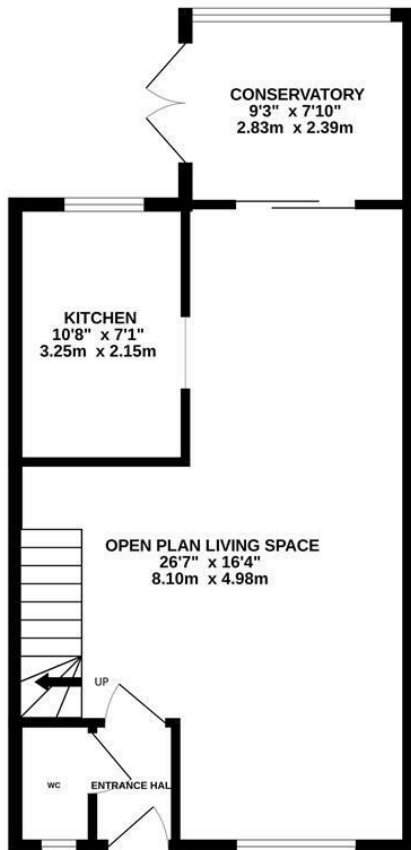
Lynwood Close, St. Leonards-On-Sea TN37 7HT

Offers in excess of £300,000

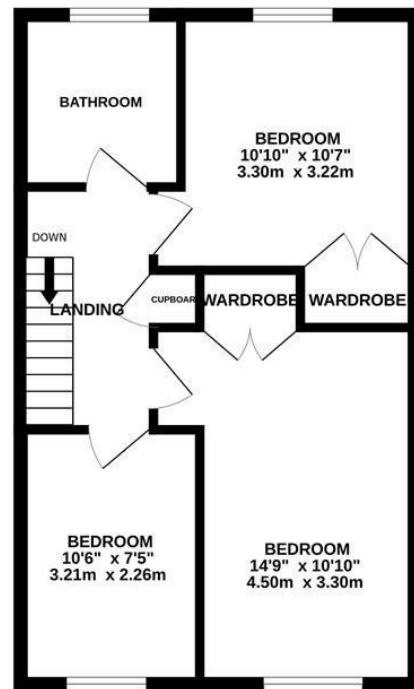


Beautifully presented THREE BEDROOM end of terrace house set in a HIGHLY SOUGHT AFTER LOCATION within a quiet CUL-DE-SAC. It's ideally placed within walking distance to popular schools and within easy reach to good transport links, Alexandra Park and local shops. The accommodation here is arranged as a bright, OPEN PLAN LIVING SPACE which measures an impressive 26'7 x 16'4 providing plenty of room for a full dining table and leads through to the FITTED KITCHEN. There is also a CONSERVATORY which enjoys access to the garden along with a handy DOWNSTAIRS CLOAKROOM. On the first floor there are three bedrooms with two of the rooms benefitting from BUILT-IN WARDROBES together MODERN FAMILY BATHROOM where there is a bath with shower and screen over. Externally the PRIVATE REAR GARDEN provides the perfect spot to dine al-fresco with a raised decked area followed by a level of lawn housing a STORAGE SHED. This property also benefits from a GARAGE EN BLOC. Set in a favoured location and PRESENTED TO AN EXCELLENT STANDARD throughout this fantastic property is not to be missed.

GROUND FLOOR
507 sq.ft. (47.1 sq.m.) approx.



1ST FLOOR
453 sq.ft. (42.0 sq.m.) approx.



TOTAL FLOOR AREA : 960 sq.ft. (89.1 sq.m.) approx.

Whilst every attempt has been made to ensure the accuracy of the floorplan contained here, measurements of doors, windows, rooms and any other items are approximate and no responsibility is taken for any error, omission or mis-statement. This plan is for illustrative purposes only and should be used as such by any prospective purchaser. The services, systems and appliances shown have not been tested and no guarantee as to their operability or efficiency can be given.
Made with Metropix G2024

